

WAFER TYPE DUAL PLATE CHECK VALVE

CB 3440



ROBINETTERIE INDUSTRIELLE ET ACCESSOIRES
INDUSTRIAL VALVES AND ACCESSORIES

APPLICATION

General uses: pumping, water supply, gas, air conditioning installation.

GENERAL CHARACTERISTICS

Design in accordance with standard NF EN 12334 and NF EN 14341.

Range: From DN 40 to DN 800.

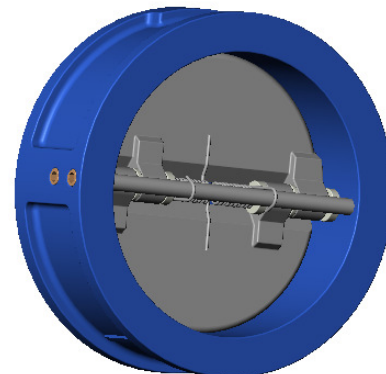
Mounting between flanges.

Working positions: horizontal and vertical ascending, and vertical descending position < DN 150.

Mounting in accordance with many standards connections.

Low head loss.

Stainless steel spring technology to avoid fluid hammer.

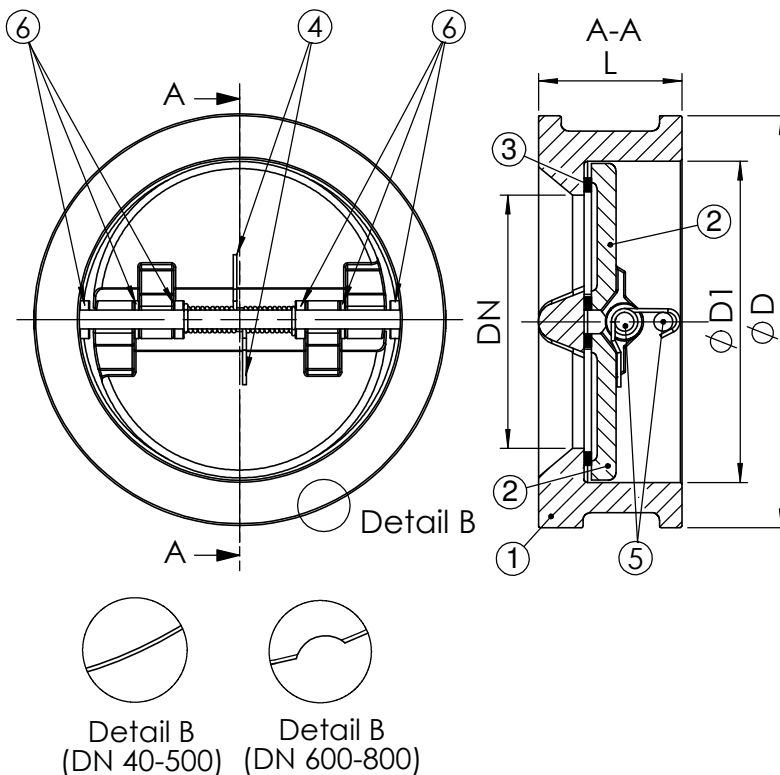


CONSTRUCTION

6	6	Washer	PTFE	
5	2	Stem	Stainless steel	
4	2	Spring	Stainless steel	
3	2	Gasket	EPDM	
2	2	Plate	Ductile iron EN-GJS-400-15	DIN: GGG 40 ASTM: A536 65-45-12 BS: 1563 EN-JS1030
1	2	Body	Cast iron EN-GJL-250	DIN: GG25 ASTM: A48 class 40B BS: 1452 Grade 250
Rep.	Qty.	Description	Material	

DIMENSIONS

DN		L	Ø D	Ø D1	Weight (kg)
mm	inch				
40	1"1/2	43	90	65	1,2
50	2"	43	107	65	1,5
65	2"1/2	46	127	80	2,4
80	3"	64	142	94	3,6
100	4"	64	162	117	5,7
125	5"	70	192	145	7,3
150	6"	76	218	170	9,0
200	8"	89	273	224	17
250	10"	114	328	265	26
300	12"	114	378	310	42
350	14"	127	438	360	55
400	16"	140	489	410	75
450	18"	152	555	450	107
500	20"	152	594	505	111
600	24"	178	690	624	172
700	28"	229	800	720	219
800	32"	241	930	825	314



WORKING CONDITIONS

Minimum opening pressure : near to zero

Maximum working pressure :16 bar.

Maximum temperature : +110°C.

Pressure test according to standards

EN 12266-1, DIN 3230, BS 6755 and ISO 5208 :

Body : 24 bar.

Seat : 17,6 bar.

STANDARDS

Manufacture according to the requirements of the European directive 97/23/CE «Equipment under pressure»: fluids category III modulate H. (Range DN 40-300)

Face to face according to standard EN 558-1 serie 16.

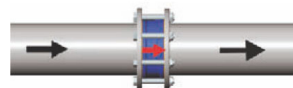
Mounting between flanges according to standard EN 1092-2 :

DN 40-400 : PN 10/16.

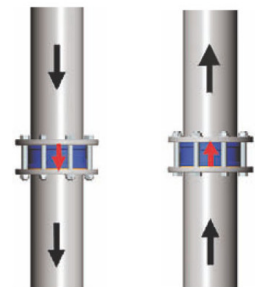
DN 450-800 : PN 16.

ASA 150 lbs on request.

Horizontal
For assembling in horizontal position, check axis as to be placed in vertical position.



Vertical
To be assembled in vertical position the opening direction of the plates has to be in accordance to the direction of the fluid



Descending flow
DN<150

Ascending Flow